



Gulf Intracoastal Canal Association

Mike Toohey
President/CEO
Waterways Council, Inc.

Making Progress: 2018, A Very Good Year



Congressional Appropriations

Full and Efficient use of Inland Waterways
Trust Fund
Record Funding for Operations &
Maintenance (O&M)



Water Resources Development Act (WRDA) Legislation Enacted



Harmful Tolls, User Fees Rejected by Congress



New Priority Navigation Projects

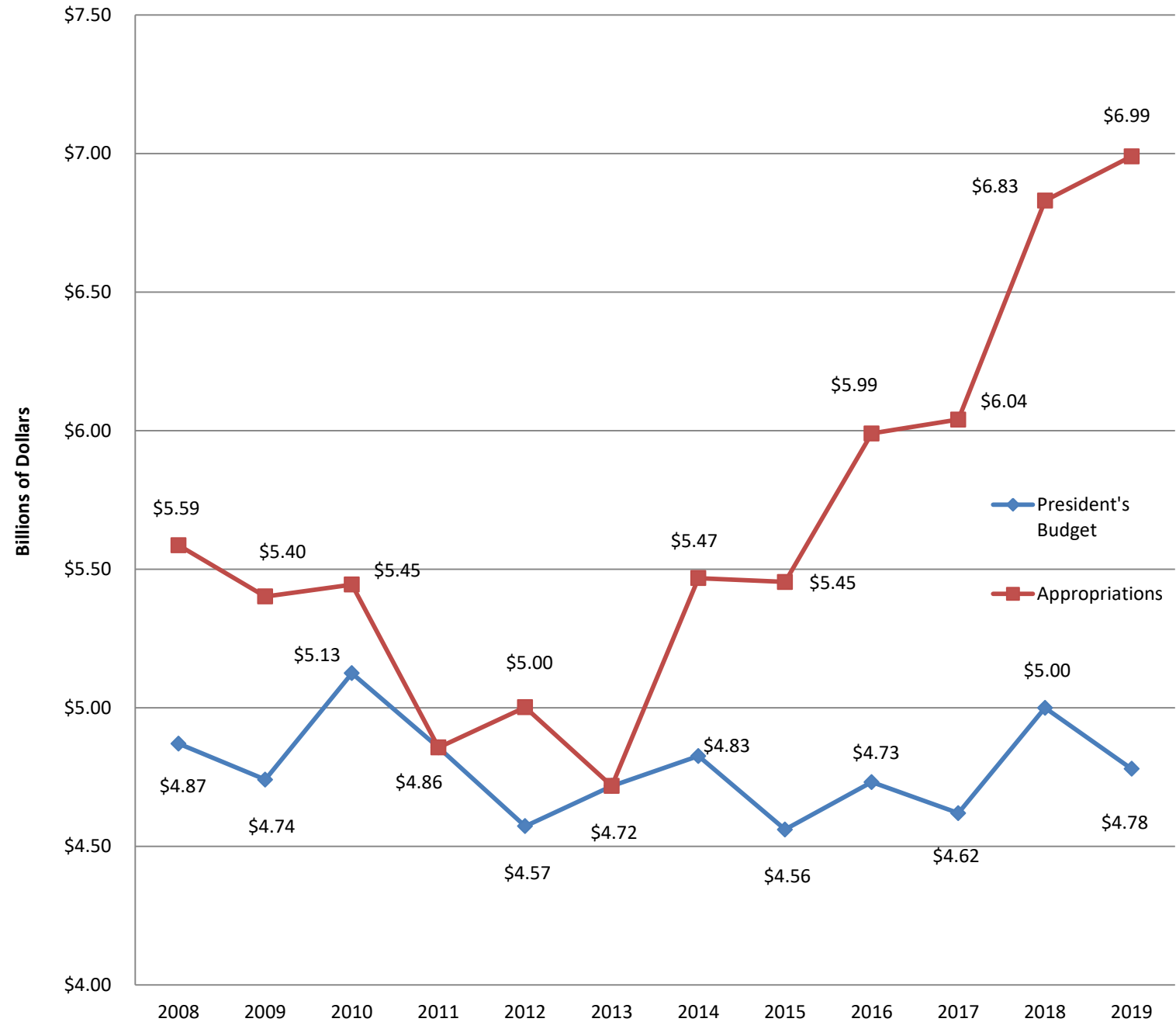


Olmsted Locks and Dam Dedicated, Operational

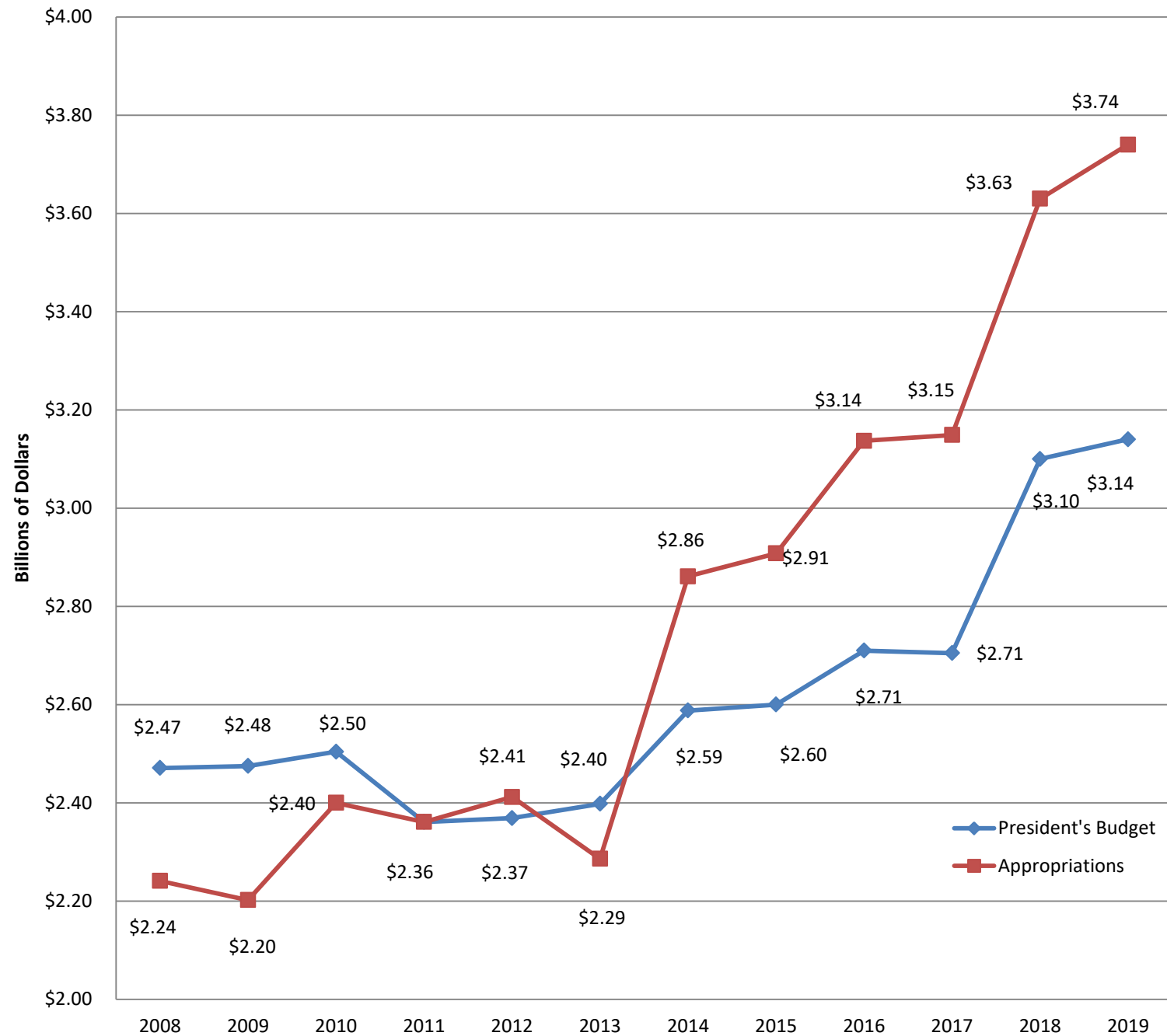


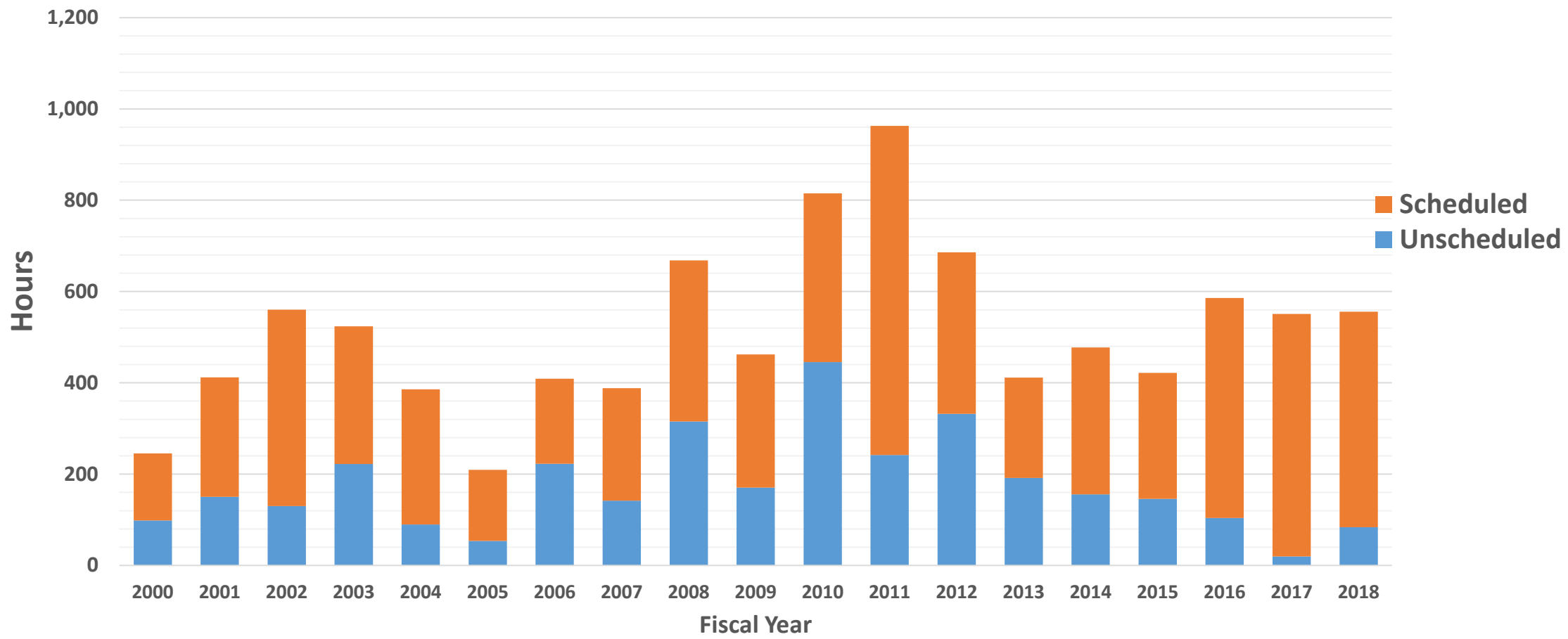
Capital Development Plan implementation well underway

Army Corps – Civil Works Total Annual Funding



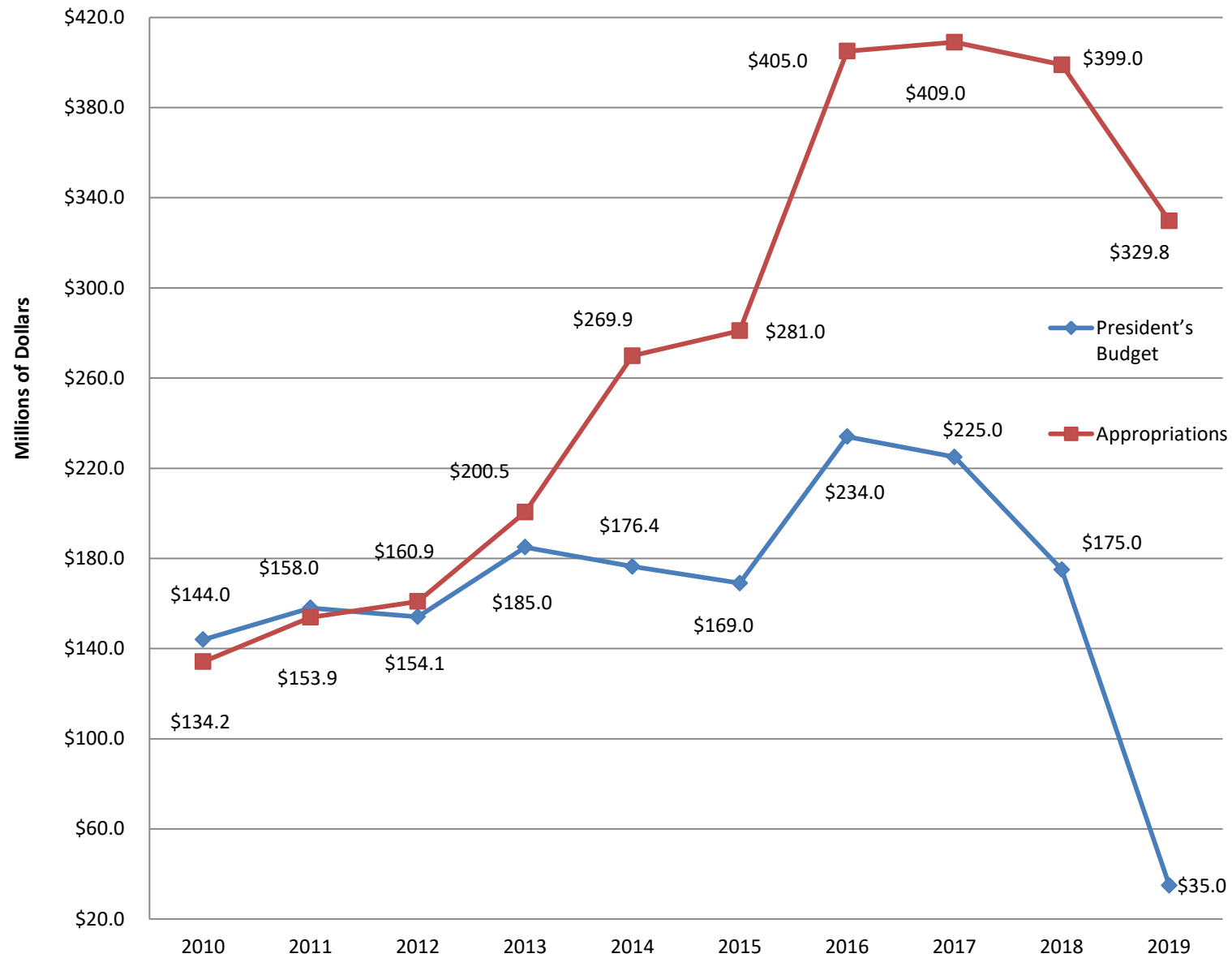
Annual Funding for Operations and Maintenance





*National Lock Portfolio Service Trends
Main Chamber Mechanical Unavailable Hours
(Events Longer than 1 Day)*

Annual Funding for Inland Waterways Trust Fund Construction



New Construction Completion Dates

Project	Prior to WRRDA 14 and Fuel Tax Increase	Current Projection
Olmsted L/D Construction	2024	2018 (operational)
Lower Mon 2,3,4, Replacement	2027	2023
Kentucky Lock Addition	2041	2023
Chickamauga Replacement Lock	2051	2024
*LaGrange 600' Lock Rehabilitation	NA	2019 (FUNDED TO COMPLETION)

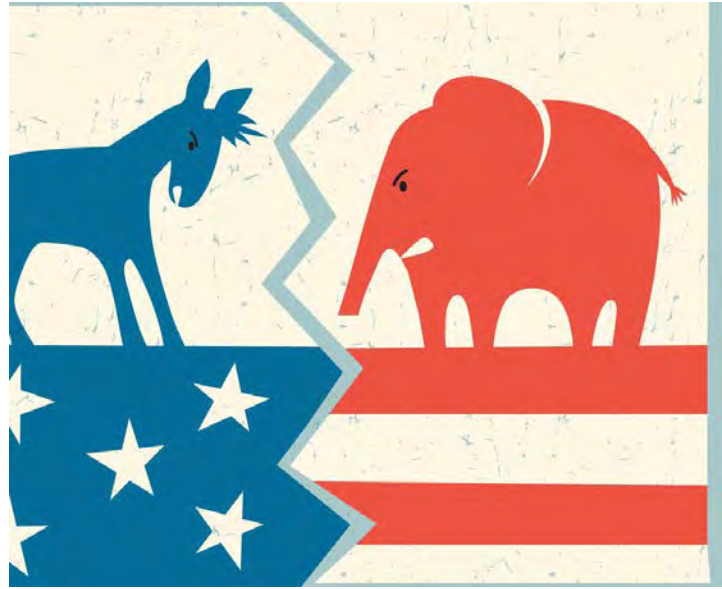


Olmsted Lock and Dam Operational

- Ribbon Cutting: August 29, 2018
- 4 years ahead of Post Authorization Change Report Schedule
- \$330 million Saved



Shell Cracker Plant Coordination Efforts



WRDA

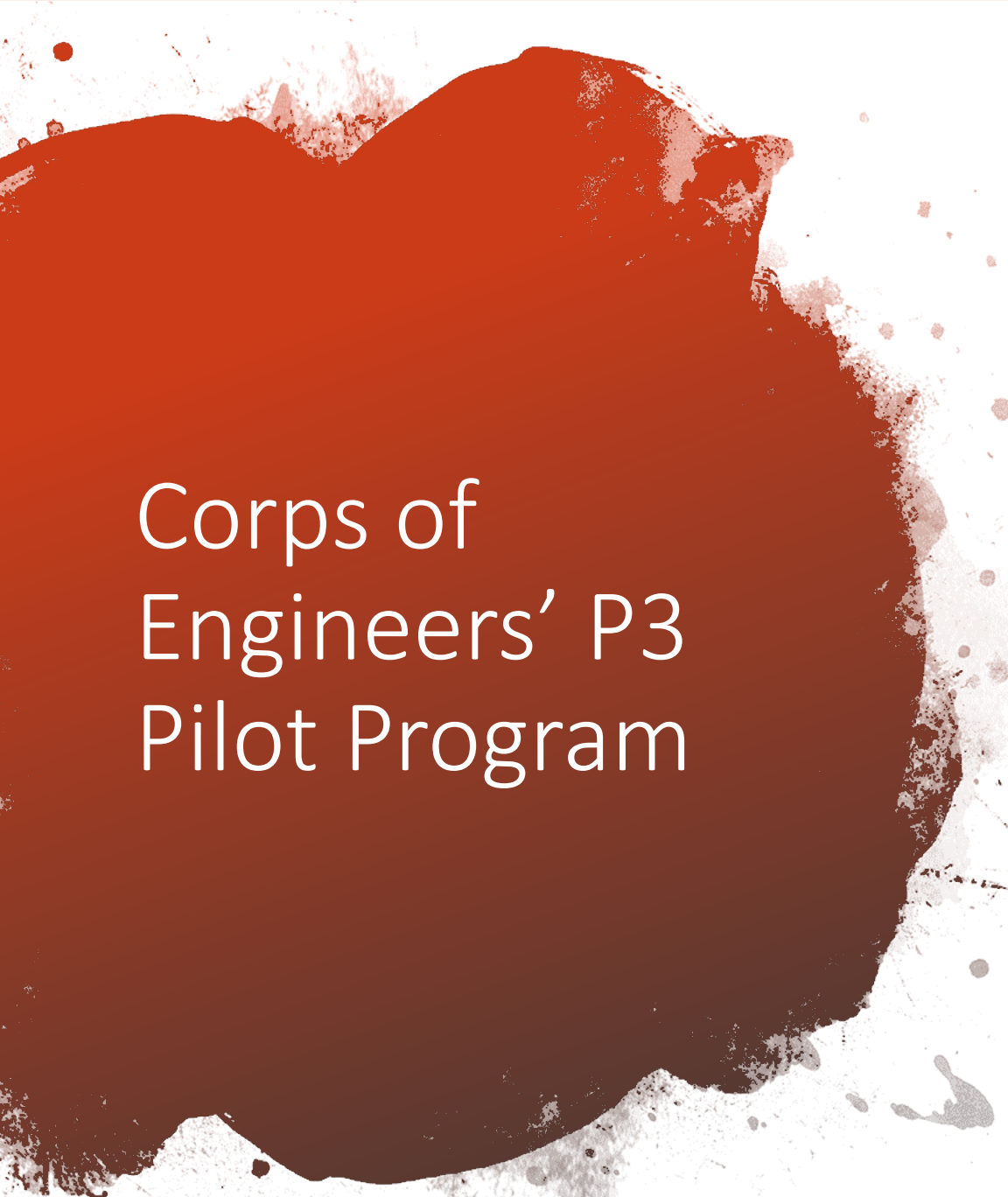
What's Ahead

Infrastructure Update

SKILLY ©2019 PITTSBURGH POST-GAZETTE CREATORS SYNDICATE



©Steve Koley.

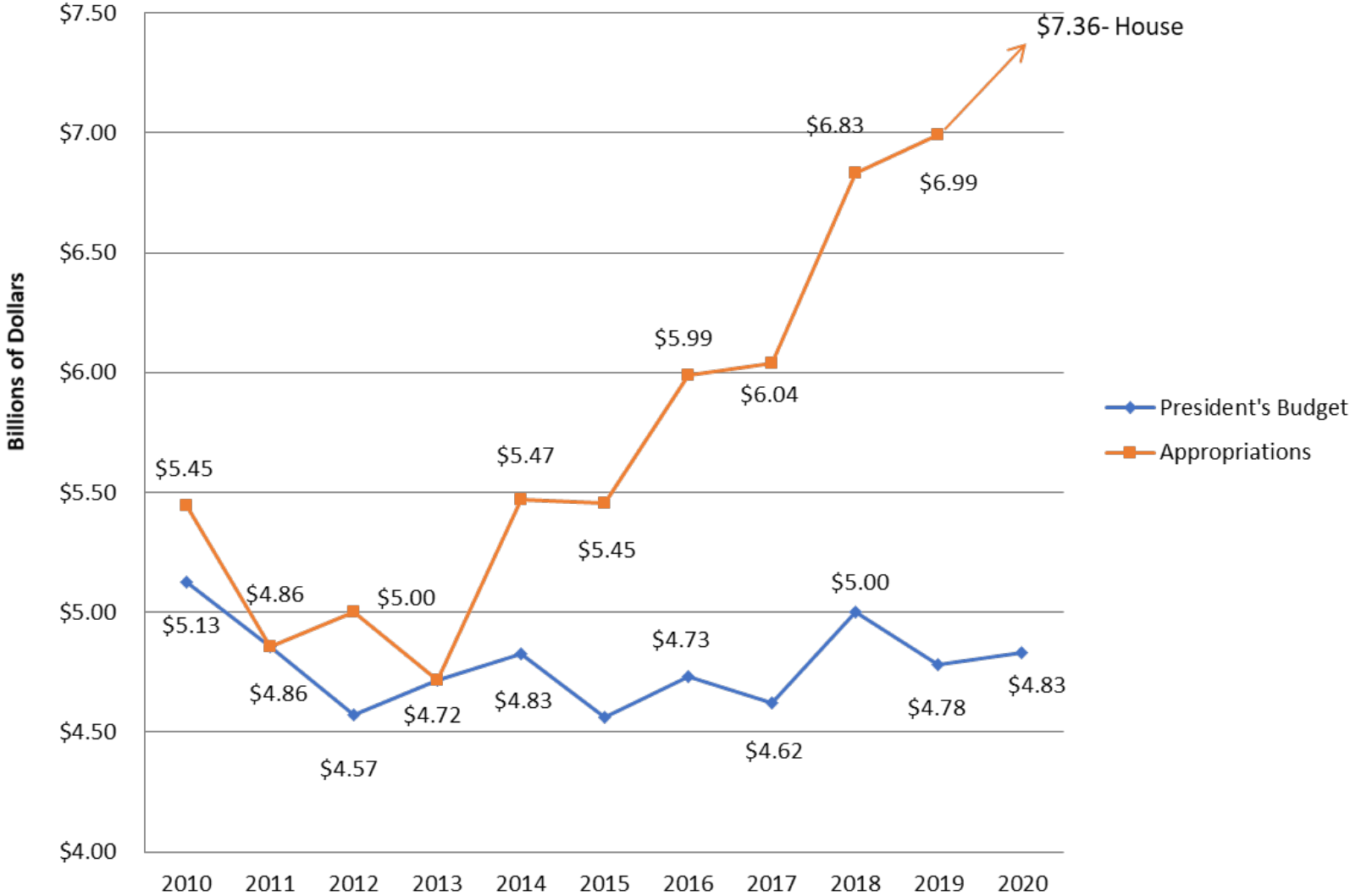


Corps of Engineers' P3 Pilot Program

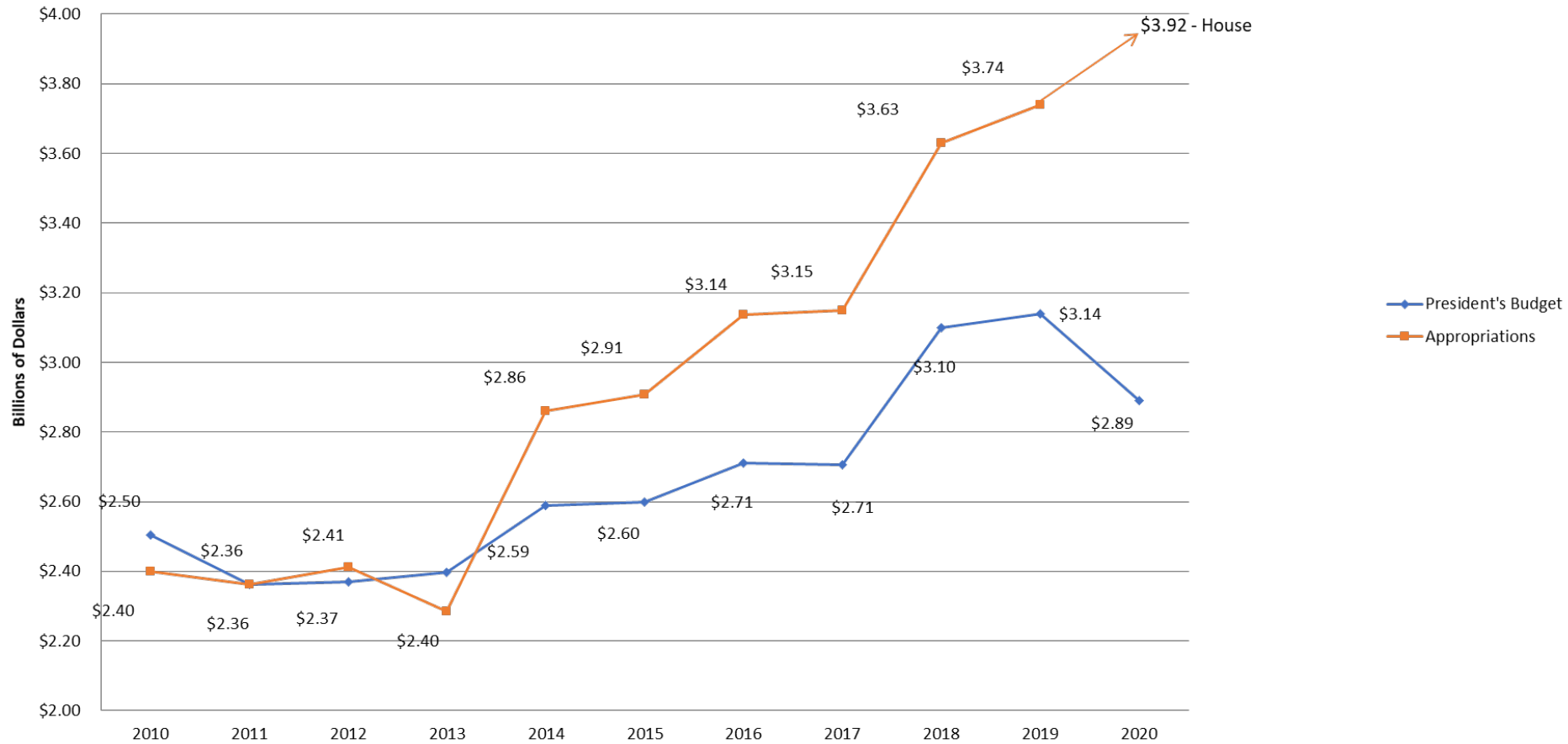
- 8 projects submitted
 - Chicago Maritime Museum & Visitors Center
 - **New Soo Lock Construction**
 - Arcadia, Wisconsin Flood Risk Management Study
 - Morganza to the Gulf of Mexico, LA Project
 - Cape Cod Canal Highway Bridges, Cape Cod Canal Federal Navigation Project
 - **Los Angeles River P3 Pilot Concept**
 - **Brazos Island Harbor Channel Improvement Project, TX**
 - **Sabine Pass to Galveston Bay Coastal Storm Risk Management Project**

Appropriations

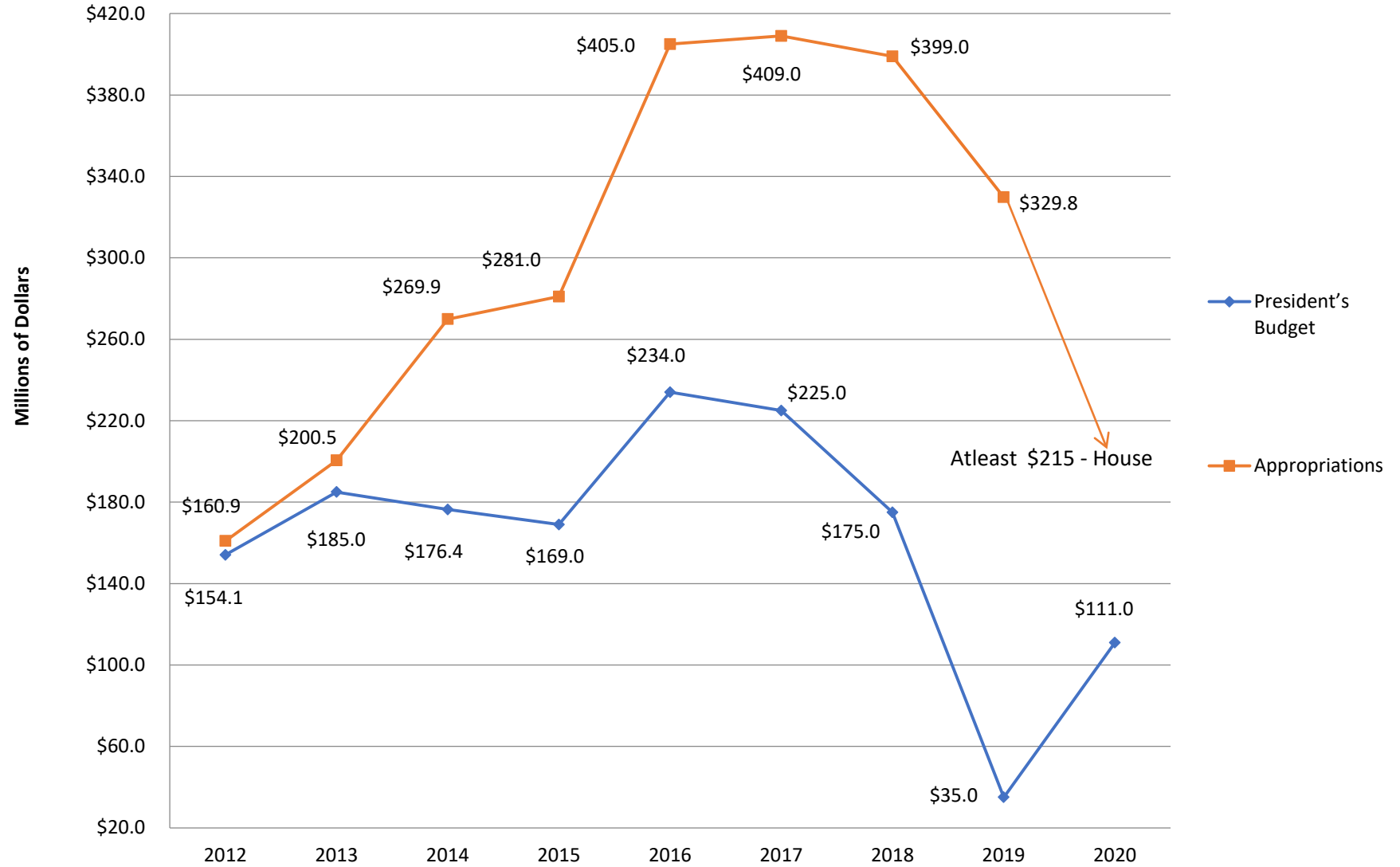
Army Corps – Civil Works Total Annual Funding



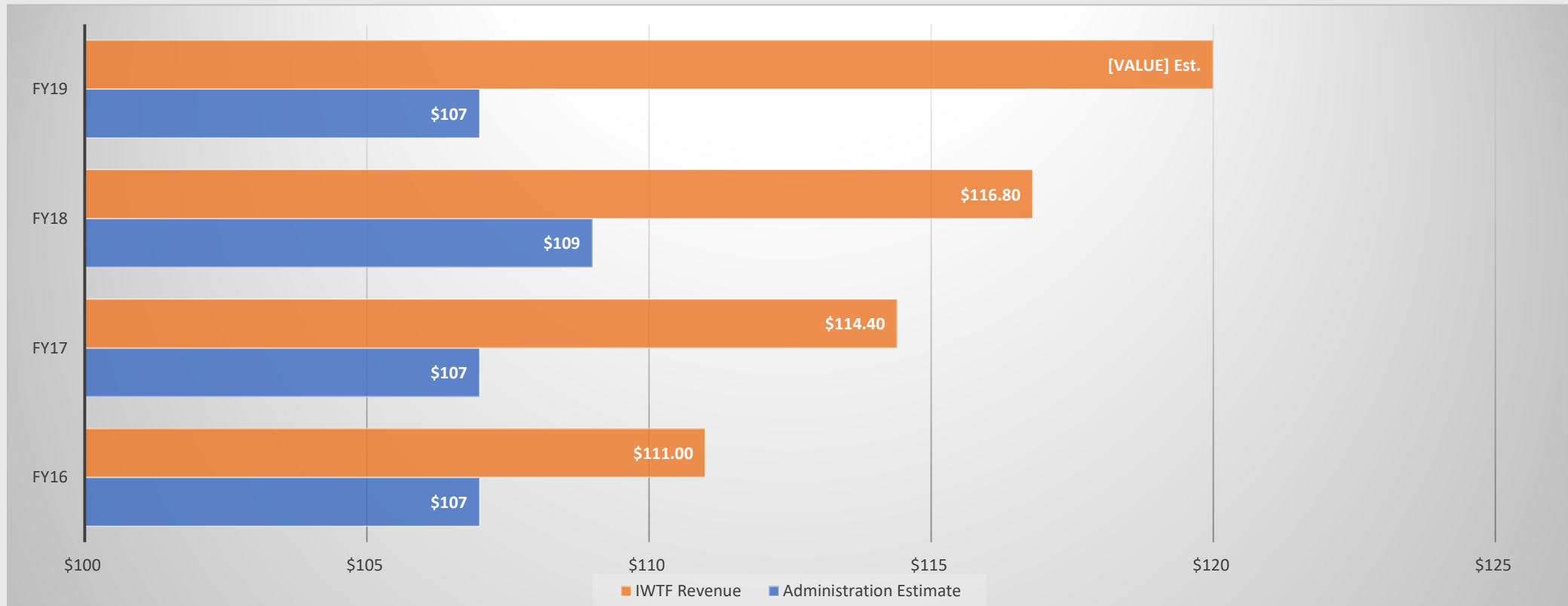
Annual Funding for Operations and Maintenance



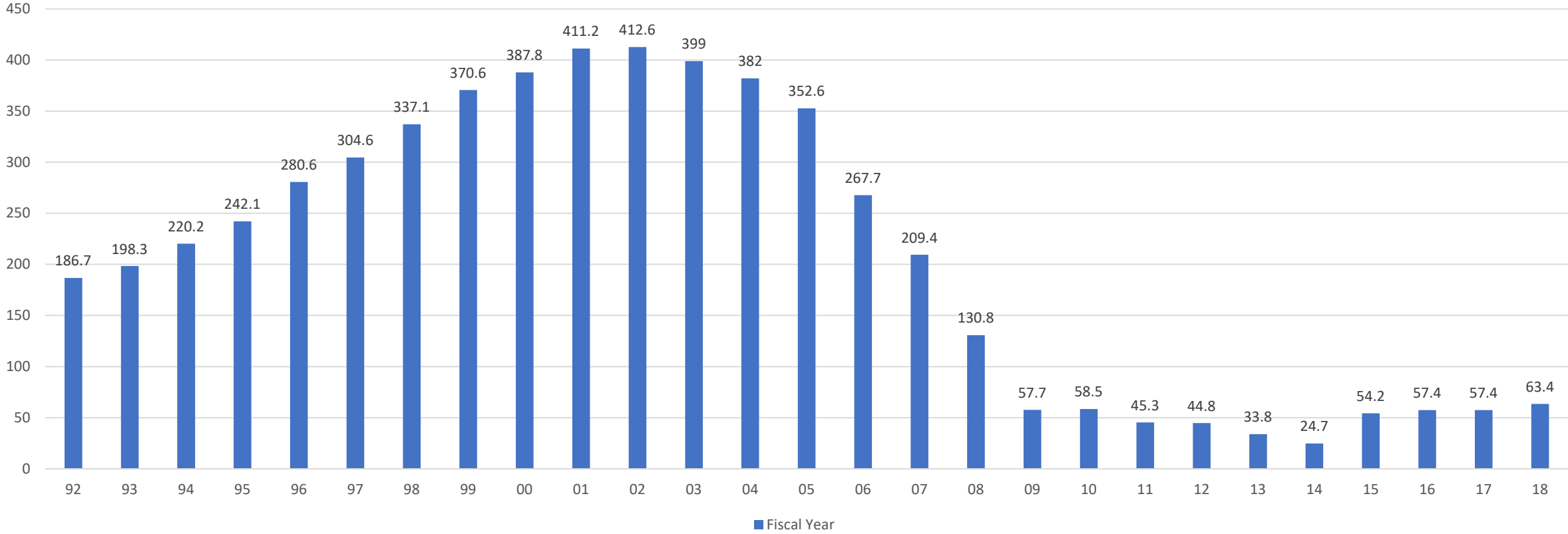
Inland Waterways Trust Fund Construction Funding



Inland Waterways Trust Fund Receipts: Administration Estimate vs. Actual



Inland Waterways Trust Fund Year-End Balance



WCI Infrastructure/ WRDA Priority

Conforming the Cost-Share of
Inland Waterways Trust Fund

50/50
Cost
Share

- 10 years = 6 projects funded to completion
- 20 years = 12 projects funded to completion
- After 20 years = 13 projects still not completed

75/25
Cost
Share

- 10 years = 12 projects funded to completion
- 20 years = 25 projects funded to completion
- After 20 years = 0 projects left to be completed in portfolio

Fiscal Year	IWTF Revenues (Million)	Priority Project Allocations (Million)	Cost Share Percentage
2014	\$81.7	\$269.9	30.3%
2015	\$97.9	\$281	34.8%
2016	\$111.1	\$405	27.4%
2017	\$114.4	\$409	27.8%
2018	\$116.8	\$399	29.3%
2019	\$115 (EST)	\$329.8	34.9%
Total	\$636.9	\$2093.7	30.4%

Cost-Share Percentage History

Expected
Projects That
Would
Benefit on
GIWW

Calcasieu Lock

Brazos High Island

Brazos River to Port O'Connor

Inner Harbor Navigation Canal Lock

Brazos River Floodgates - Colorado Locks



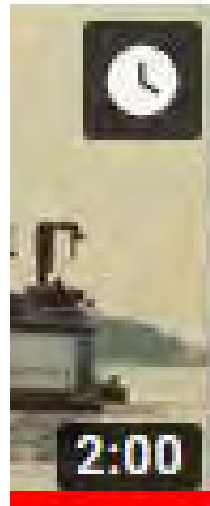
ot...

The inland waterways support workers and the...

260 views • 3 weeks ago

U.S. Army Corps of Engineers' Project Manager...

604 views • 3 weeks ago



t Inland Waterways Supp

WCI's New Educational Videos

Please feel free to share on your social media platforms



Questions?

- mtoohey@waterwayscouncil.org
- 202-765-2166
- Stay Connected:
Text **LOCKS** to **52886**