

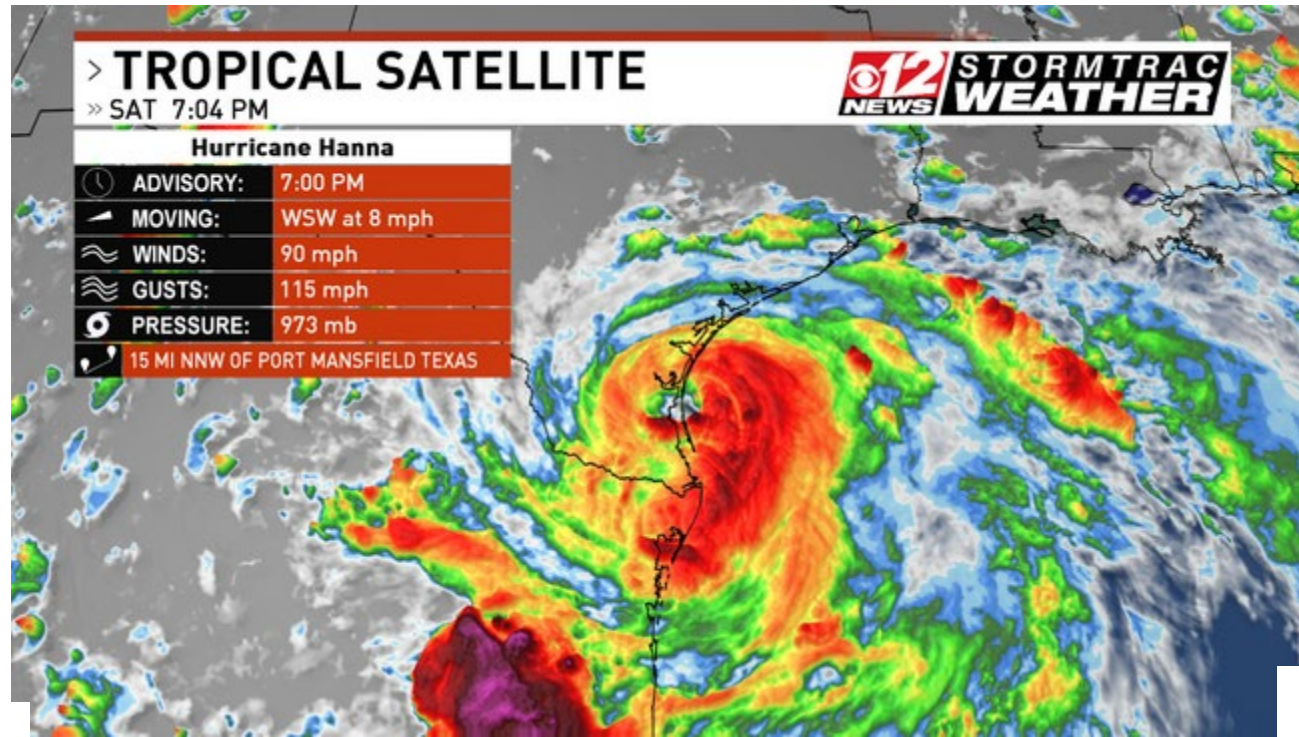
2020 Gulf Intracoastal Canal Association

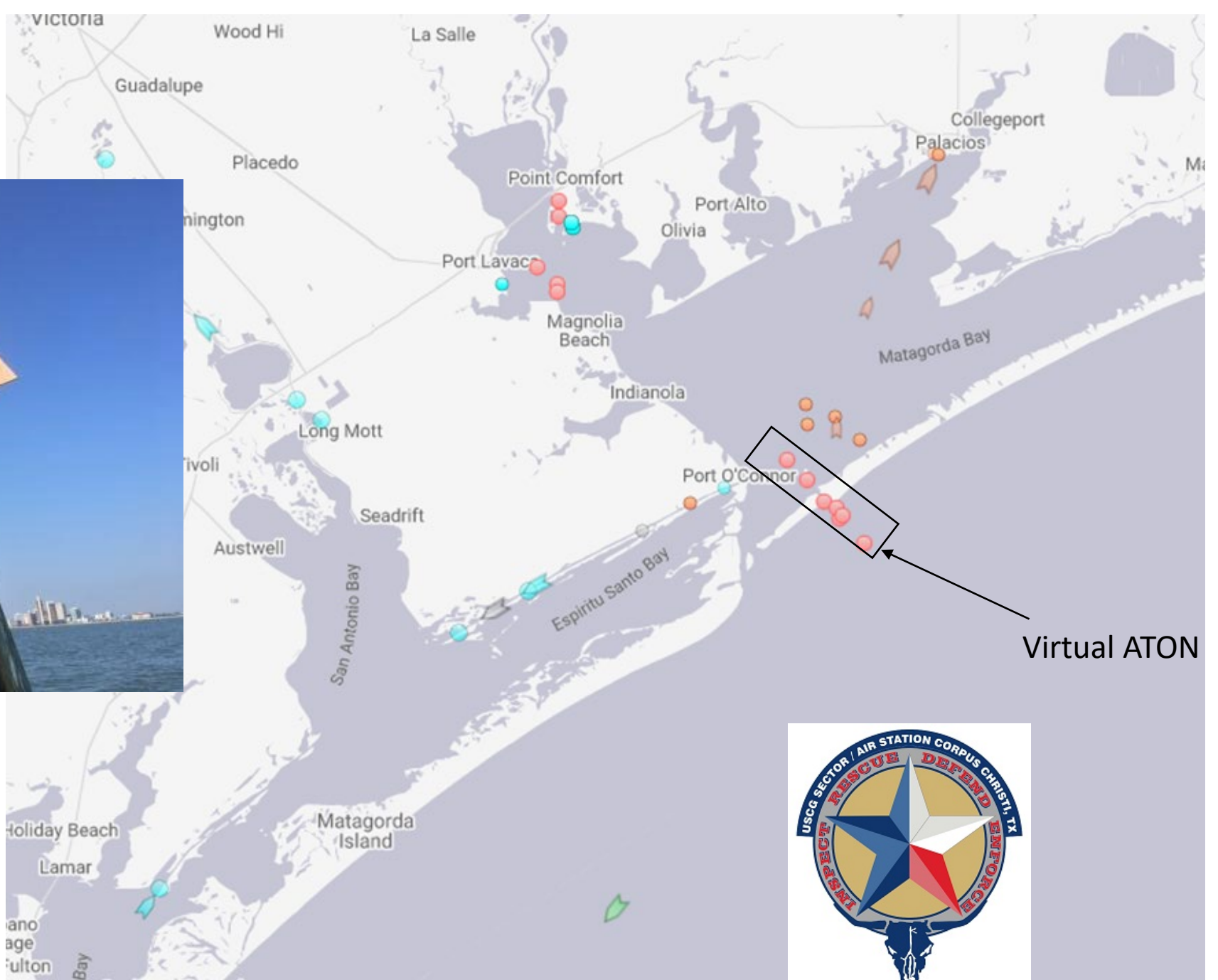


Captain Edward Gaynor
Captain of the Port
Corpus Christi



Hurricane Hanna





Severe Weather Reconstitution

Status: All Ports were at Zulu (Closed)

- Open Waterways one by one after assessments (flight, facility, small boat, test transits [tow, pilot boats], USACE survey).

Your help was greatly appreciated!!

- Re-opened ports when all waterways with a port/area have been assessed.

