

The logo of the U.S. Coast Guard Sector/Air Station Corpus Christi is a circular emblem. It features a central compass rose with four points: a blue point pointing up, a white point pointing down, a red point pointing left, and a yellow point pointing right. The compass rose is set against a yellow background. The entire emblem is enclosed in a blue circular border with white text. The top half of the border reads "U.S. COAST GUARD SECTOR / AIR STATION CORPUS CHRISTI" and the bottom half reads "RESCUE DEFENSE PROMOTION".

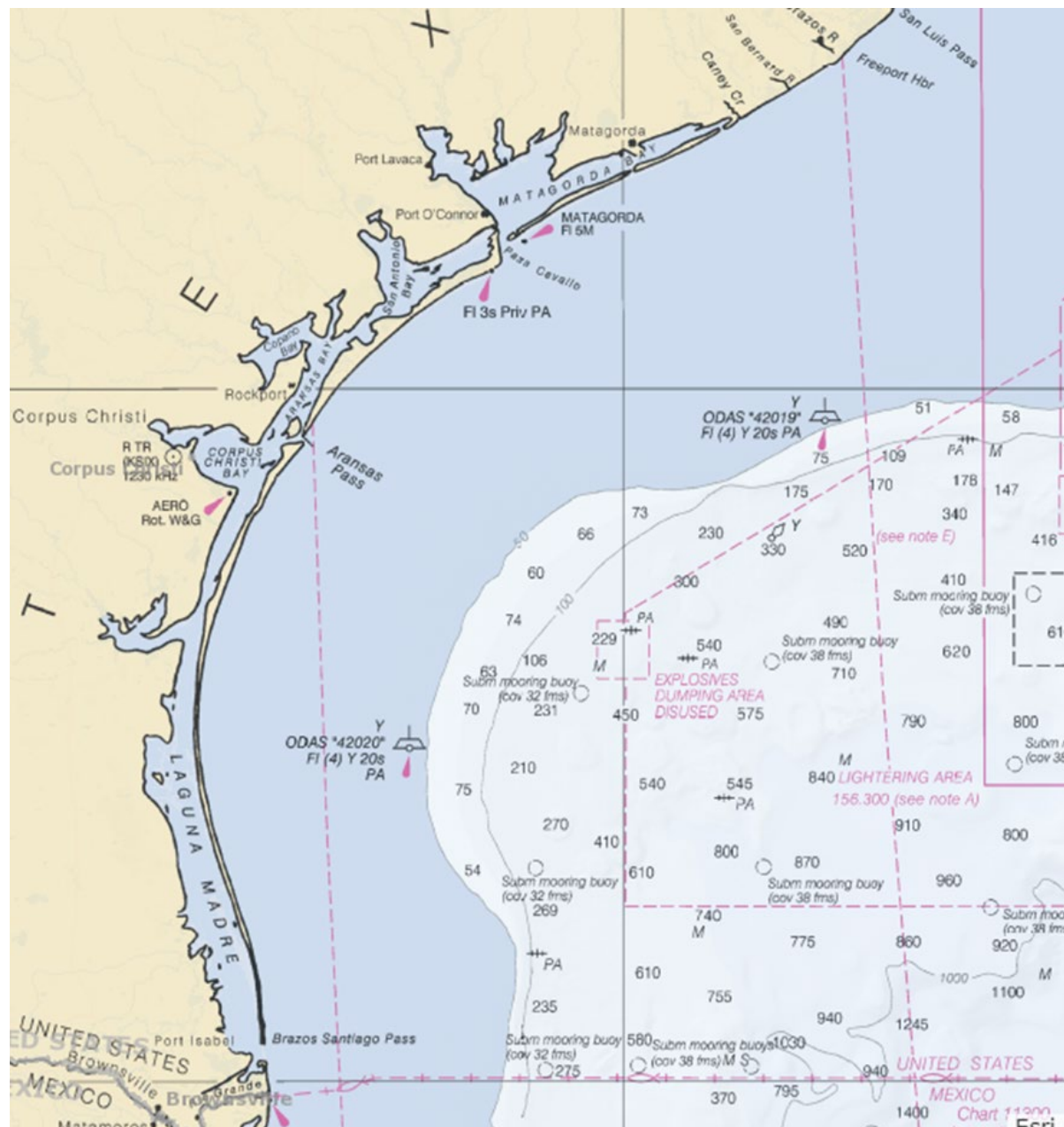
U.S. Coast Guard Sector/ Air Station Corpus Christi

**Sector Commander: CAPT E. Gaynor/ after 18 June
CAPT H. Govertsen**

Deputy Sector Commander: CAPT J. Gunning

Prevention Dept: CDR D. Salik

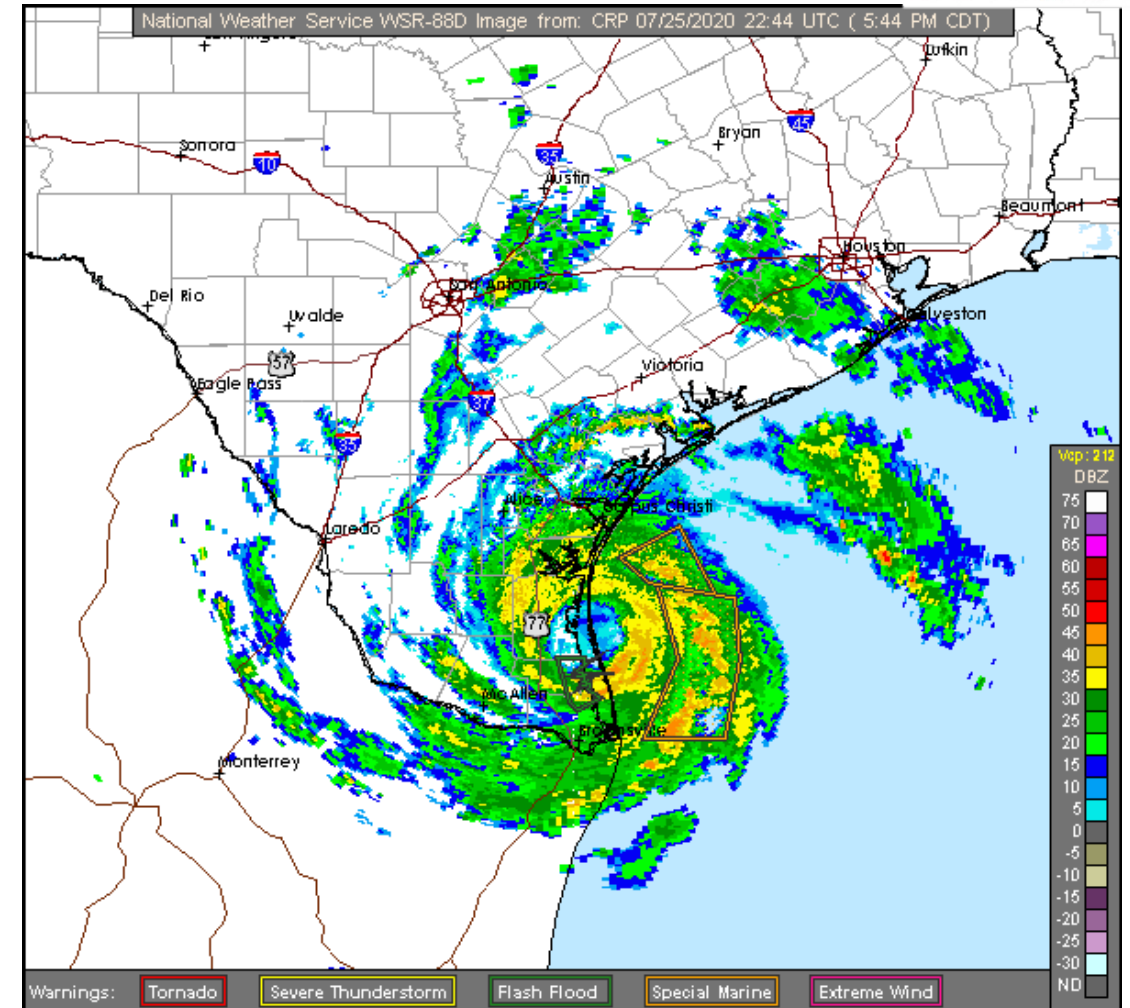
Area of Operations- CO River Locks south to Rio Grande





Hurricane Hanna

- 21 July: System entered southeastern Gulf of Mexico
- 21 July/ PM: Strengthened to TS
- 22 July/ 1914: Port Condition Whiskey
- 24 July/ noon: Port Condition Yankee
- 24 July/ 2200: Port Condition Zulu
- 25 July/ 0500: Strengthened to Hurricane
- 25 July/ 1700: Landfall on Padre Island
- 25 July/ 1815: Crossed Laguna Madre, 2nd landfall north of Ports Mansfield





Hurricane Hanna: Reconstitution

- Overflight of area 26 July/ AM + ATON crews underway. Id'd shoaling in ICW south of CC
- 27 July/ 0538: opened ICW from CCSC to CO Locks
- Utilized test tows between Brownsville & and CCSC coordinated by GICA (thank you!) Tows gave add'l info on shoaling/ debris
- 28 July/ 2024: ICW from CCSC to Brownsville opened to tows pushing empty barges in daylight
- 30 July/ 1723: AOR fully open





Hurricane Hanna: Lingerin Impact

- Shoaling continued to persist at MM 603 (land-cut north of Port Mansfield). Tows reported seeing sand in channel & depths of 3' or less.
- Emergency dredging contracted by USACE
- Safety Zone for area from 1500 on 11 Aug until 1500 on 15 Aug





Hurricane Hanna: Lessons Learned

- Hurricanes aren't just a late summer threat- be prepared!
- Brownwater operators are invaluable source for waterway challenges (explained everything from tow limitations to moon phases affecting shoaling and more)
- Post-hurricane communication can be challenging in areas with communication infrastructure damage
- Overflights are quickest way to ID problematic areas, but post-hurricane weather conditions could delay flight



Communication Methods

- Port Coordination Team
- Marine Safety Information Bulletins (contact LCDR Brown if not on distro)
- Broadcast Notice to Mariners
- Email
- Homeport



Marine Safety Information Bulletin

57-20, Update 6 and Final

Hurricane HANNA-
Port Condition Recovery

Date Issued: July 30, 2020

The Captain of the Port (COTP) Corpus Christi has rescinded Port Condition Zulu for the area of responsibility from the Colorado Locks to the U.S. Mexico border (including the ports of Port Lavaca- Point Comfort, Palacios, Victoria, West Calhoun, Corpus Christi, Port Mansfield, Harlingen, Port Isabel, and Brownsville).

Shoaling has been noted in the Gulf Intracoastal Waterway south of Baffin Bay in the vicinity of Mile Markers 629 and 603. Mariners should avoid passing or overtaking in these locations, and use extreme caution when navigating in all South Texas waterways as post-hurricane hazards may be present.

The U.S. Army Corps of Engineers posts survey data to:

<https://ceswg.maps.arcgis.com/apps/opsdashboard/index.html#/7933aacc62b44547b00f6024c59b4c3c>

To Get access to the survey data:

--Zoom into the channel of interest and click on a segment of the channel.

--A box will pop up with the survey links.

--Click on the links ("Latest Survey" = PDF file / "Latest XYZ" = Survey Data)

All hazards are requested to be reported to the U.S. Coast Guard Sector/ Air Station Corpus Christi Command Center on VHF radio channel 16 or by phone at (361) 939-0450.

M. A. BROWN

Lieutenant Commander, U.S. Coast Guard
By Direction of the Captain of the Port



Mooring Plans

- MTS delays encountered after Hurricane Harvey due to vessels remaining in port/ broke moorings
- Please ensure your moorings are sound





U.S. Coast Guard Sector/ Air Station Corpus Christi

Key Contact Info for Hurricane Season

Command Center: 361-939-0450/ SecCCCommandCenter@uscg.mil

Prevention Dept: 361-939-5100

WWM: 361-244-4784/ CCWaterways@uscg.mil

ATON: 361-939-5102